

MADE IN THE USA



5606 N US HWY 81
ENID, OK 73701

9 ROW WAKO XT FLEX HARROWS



**IN STOCK
NEW:**

REGULAR	SALE
31' \$ 23,182	\$ 20,850
42' \$ 28,252	\$ 25,425
51' \$ 30,755	\$ 27,650

**DEMO MODEL
51' \$ 26,150**

**MULTI-PURPOSE
HEAVIEST ON THE MARKET
LONG LIFE
LOW MAINTENANCE**



CHROME INSERT ON EVERY TINE



HYDRAULIC FOLD



SERVICE AFTER THE SALE
800-299-4300
580-234-3434
sales@wakollc.com
customerservice@wakollc.com

www.wakollc.com

WE JUST BUILD 'EM BETTER



Est. 1962

MADE IN THE USA

5606 N US HWY 81
ENID, OK 73701

IN STOCK SPRAYERS

WAKO FIELD CRUISER 1000 GALLON SPRAYER



W/HYDRAULIC LIFT
42'-60' FLOATING AUTOGLIDE BOOMS
HYDRAULIC CENTRIFUGAL PUMP

REGULAR PRICE

42' \$20,510.00
52' \$20,022.12
60' \$23,063.62

SALE PRICE

\$18,510.00
\$18,022.00
\$21,064.00

THE COBRA MISTER LIVESTOCK FLY CONTROL

NEW
FALL 2020



95' HORIZONTAL THROW
70' VERTICAL THROW

\$ 5195

40 GALLON TANK
11 HP ELECTRIC START
HONDA ENGINE
4 ROLLER HYPRO CAST PUMP
HANDWAND AND 10' HOSE
WIRELESS REMOTE
BATTERY NOT INCLUDED

FITS UTV OR PICKUP

UTV SPRAYERS

FS MANUFACTURING 50 OR 100 GALLON

50 Gallon Electric \$ 1745

Part # ASRMATV50E REG. \$1939

50 Gallon Gas 4 HP Honda \$ 2075

Part # ASRMATV50 REG. \$2306

100 Gallon Electric \$ 1807

Part # ASRMATV100E REG. \$2008

ENDURAPLAS 60 GALLON

FIELD BOSS

60 Gallon Electric \$ 1824

Part # ASREATV60E REG. \$2027

60 Gallon Gas 4 HP Honda \$ 2159

Part # ASREATV60 REG. \$2399



WAKO MANUFACTURED 75 GALLON GAS OR ELECTRIC

75 Gallon

Electric \$ 1636

Part # ASRW075E REG. \$1818

75 Gallon Gas

4 HP Honda \$ 2077

Part # ASRW075 REG. \$2308

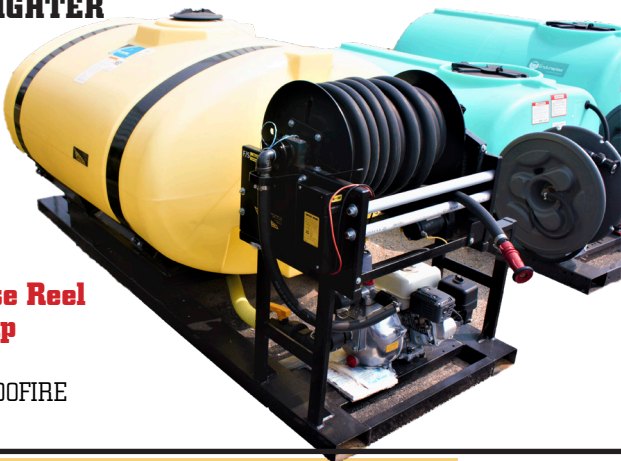
FIRE FIGHTER SPRAYERS

WAKO MANUFACTURED FIRE FIGHTER

\$ 3785

400 Gallon
Electric Hose Reel
Aussie Pump

Part # ASRW400FIRE
REG. \$4206



ENDURAPLAS FIRE RANGER

300 Gallon \$ 3665

Part # ASRESMF300FIRE
REG. \$4072

400 Gallon \$ 3759

Part # ASRESMF400FIRE
REG. \$4177

Manual Hose Reel
Aussie Pump

3 POINT SPRAYERS

WAKO MANUFACTURED

110 Gallon
Hypro 6 Roller PTO Pump
Deluxe Hand Wand
50' 1/2" EPDM Hose

\$1735

REG. \$ 1927



Call for
AVAILABILITY
55, 110,
200,
300, 400,
500 GALLON

PICKUP/SKID SPRAYERS

WAKO MANUFACTURED

\$ 2775

300 Gallon

Part # ASRW300PU
REG. \$ 3084



AUTO SHUT-OFF 55 GALLON DIESEL BOSS

\$ 550

Comes with
12V PUMP/16' CABLE
16' HOSE AND GUN



Part# MFPE55C100 REG. 786.63

TOW BEHIND 60" BOOM, TURF TIRES

\$ 555

Part# ASRMES23 REG. \$637



SPOT SPRAYERS/ATV SPRAYERS



PRICES START AT:
SALE PRICE

15 Gallon \$ 225
25 Gallon \$ 243
50 Gallon \$ 306



BUILT BY WAKO AT ENID, OKLAHOMA

WHAT MAKES THIS BETTER THAN THE AVERAGE SPRAYER?

- FULLY REPLACEABLE PARTS-ALL AVAILABLE AT WAKO
- SHURFLO 3.5 GPM PUMP W/1 YR WARRANTY
- TEE JET HANDWAND W/ADJUSTABLE TIP
- HIGH QUALITY BANJO VALVES/FITTINGS
- BYPASS/AGITATION SYSTEM WITH PRESSURE GAUGE
- 3/8" EPDM HOSE-STAINLESS STEEL WORM GEAR CLAMPS
- DOUBLE FILTERING-AT INTAKE AND NOZZLE
- ADJUSTABLE LENGTH DROPS W/CHANGEABLE NOZZLES

SERVICE AFTER THE SALE
800-299-4300
580-234-3434
sales@wakollc.com
customerservice@wakollc.com

WE JUST BUILD 'EM BETTER



Est. 1962

www.wakollc.com



BARN BURNER PRICING!!!



**6000 GALLON TRAILER
WITH 2-3000 GALLON CONE BOTTOM
TANKS**



\$ 9200
REGULAR PRICE \$10,300

MANUAL HYDRAULIC LIFT
(SETS FLAT ON FRAME)
PUMP AND PLUMBING:
2" POLY BANJO 5 HP HONDA
3" FEED, 2" DISCHARGE
10 YEAR TANK WARRANTY
STEEL TUBING FRAME,
POWDER COATED
ST 235X80R16 TIRES

1600 GALLON TANK AND TRAILER



\$ 7500

SURGE BRAKE
CHEMICAL TOTE PAD
10 YEAR TANK WARRANTY
BEHNKE TRAILER, 12.5LX, HWY TIRES
8 HOLE HEAVY HUB

**FIELD CULTIVATOR
KNOCK-ON SWEEP**

47° X 1/4"



10" PLAIN
\$ 5.50
Part # TSFCN10PL
9" PLAIN
\$ 5
Part # TSFCN09PL



\$ 1.50
CLIP
3/8" OR 7/16" BOLT HOLE

**CHISEL PLOW
SWEDGE-ON SWEEP**



\$ 6
50 X 1/4"
PLAIN
9"
10"
11"
12"



\$ 3
SWEDGE ON/ CLIP ON

**TWISTED CHISEL
SLASH POINT**



\$ 15

1/2" X 4" X 26"
LEFT ONLY
PLAIN

Part # TTCC124LPL

TWISTED CHISEL POINT



\$ 19

1/2" X 4" X 23"
LEFT AND RIGHT
PLAIN

Part # TTC124LPL LEFT
Part # TTC124RPL RIGHT

**TWISTED CHISEL POINT
HARDFACED**



\$ 25

1/2" X 3" X 23"
LEFT AND RIGHT
HARDFACED

Part # TTC123LHF LEFT
Part # TTC123RHF RIGHT

**MILLER DISC BLADES
22" 7GA REAR
26" 1/4" REAR**



\$ 15

22" Part # TDB227MR

**0-400 LIQUID PRESSURE GAUGE
OR
0-600 LIQUID PRESSURE GAUGE**



\$ 5

Part # SGASG400
Part # SGASG600

WE SHIP:
FEDEX
UPS
USPS
GROUND FREIGHT

WE ACCEPT THE FOLLOWING CREDIT CARDS



**DANISH "S" SHANK
EXTRA HEAVY**



\$ 18

DANISH POINT

\$ 2

1-3/8" X 8"
X 1/4"

Part # TSVWK1

7" DANISH SWEEP

\$ 3.50



3/16"

Part # TSVWK7

9" DANISH SWEEP

\$ 4.50

Part # TSVWK9

5606 N US HWY 81
ENID, OK 73701

PUMPS

4 ROLLER CAST

\$ 100



Part #SPMHXL4101C

6 ROLLER CAST

\$ 135



Part #SPMHXL6500C

7 ROLLER CAST

\$ 170



Part #SPMHXL7700C

SILVER 6500XL

\$ 415



Part #SPMHXL6500

**HYPRO
HYDRAULIC CENTRIFUGAL
9303C**

\$ 750



Part #SPMH9303C

**BANJO 2" POLY
5 HP HONDA**

\$ 610

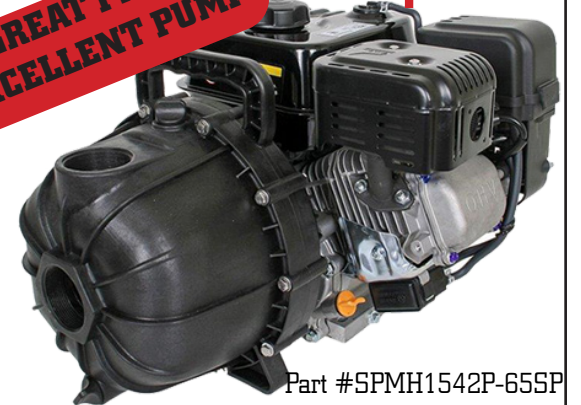


Part #SPM200P5H

**HYPRO 6.5HP
2" POLY
HONDA STYLE MOTOR**

\$ 385

**GREAT PRICE
EXCELLENT PUMP**



Part #SPMH1542P-65SP

**BANJO 2" POLY
6.5 HP BRIGGS & STRATTON
ELECTRIC START**

\$ 495



Part #SPM200P6E

**2" 5.5 HP HONDA
FIRE CHIEF**

Aussie Pumps

\$ 990



Part #ASREAPAC09

**7000 EVERFLO PUMP
7 GPM**

\$ 269



Part #SMT7000

**8000 HYPRO SHURFLO PUMP
1.8 GPM**

\$ 110



Part #SMT8000

**2088 HYPRO SHURFLO PUMP
3.5 GPM**

\$ 110



Part #SMT2088

**5503 JD SKILES PUMP
5.3 GPM with
PRESSURE REGULATOR**

\$ 199



Part #SPMT5503EE

5606 N US HWY 81
ENID, OK 73701

SPRAY SUPPLIES

**NOZZLES
THOUSANDS IN STOCK**

**HYPRO #4
80° FLAT FAN FAST CAP
WITH SCREEN**



\$ 6

Part # STPGRD12004

**HYPRO #20
BOOMLESS/BOOM X TENDER**



\$ 65

Part # SNZBB20

**#20 FASTCAP
\$ 42**



Part # SNZBB20FC

**HYPRO
80° FLAT FAN
\$.68**



Part # STP04F80

**NOZZLE BODIES
THOUSANDS IN STOCK**



**5% DISCOUNT
ON QUANTITIES
OF 25 OR MORE**

CHAFAER 20" STREAMER BAR



Part # STPMR20

\$ 24

\$ 10 TORQUE BAR



PART # SPMBAR

18" PISTOL GRIP SPRAY GUN



\$ 30

Part # SSPAA55001818

2" FULL PORT BANJO BALL VALVE



\$ 39

Part # SVAB200FP

HYPRO-QUICK COUPLER



\$ 39

5/8" 540/1000
PART # SPMH112

9" PISTOL GRIP SPRAY GUN



\$ 30

Part # SSPAA5500189

**1" NH3 NURSE TANK HOSE
AMMONIA HIGH PRESSURE
350# WP**

3' **\$ 45**
Part# HONNO103

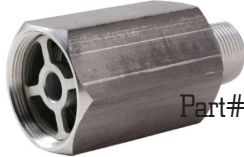
8' **\$ 83**
Part# HONNO108

12' **\$ 110**
Part# HONNO112

18' **\$ 146**
Part# HONNO118



**3/4" VAPOR RELIEF
VALVE**



\$ 36

Part# NVAA402N

**400# PRESSURE GAUGE
STAINLESS STEEL**



2.5" **\$ 10**

Part# NGAA400

4" **\$ 20**

Part# NGA4004

1-1/4" FILL VALVE



\$ 125

Part# NVAA1201

**NH3 FLOAT GAUGE
46" TOP MOUNT**

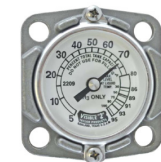
\$ 37

Part#NFGRA624

41" END MOUNT

\$ 62

Part#NFGRA6283



DIAL ONLY **\$ 11**

Part#NFG52

**1-1/4" VAPOR
RELIEF VALVE**



\$ 146

Part# NVAA417A

**KF200 APPLICATOR KNIFE
W/BEAVER TAIL SEALER**



**\$ 25
SPECIAL PRICING***

3/8" TUBE
CHROMIUM INSERT
CHROMIUM TUBE PROTECTOR

*BEAVER TAIL SEALER
IS UPSIDE DOWN
(not pictured)

HIGH CAPACITY NH3 HEAT EXCHANGER MICRO TRAC SYSTEMS

MT-NH3™ II

Improved Anhydrous Rate Control
The MT-NH3 II is an automatic rate controller designed specifically to control anhydrous ammonia. It provides a complete picture of critical application functions and an accurate record of work performed.

\$ 950



Part # SCS014956

LIQUIFIER JUNIOR

Complete Stainless Steel Cooler, Flowmeter,
Regulating Valve and Shutoff Valve

\$ 2900



**6000 lbs. NH3/hr.
23 GPM (@100PSI)**

Part # SCS01816

DirectConnect Technology

Micro-Trak's NH3 kits and harnesses are compatible with the following rate control systems; Ag Leader, Raven, Topcon, Trimble, John Deere and many more.

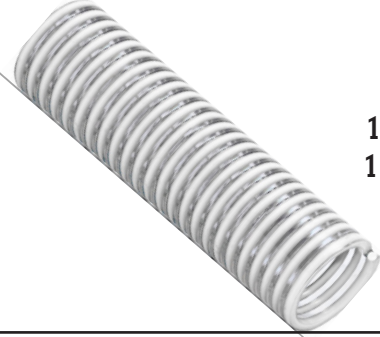
If you do not see your console, simply give us a call for the latest list available.

5606 N US HWY 81
ENID, OK 73701

HOSE

HOSE IS PRICED PER FOOT
BUY ONLY WHAT YOU NEED OR
CHEAPER BY THE ROLL

PVC SUCTION/DISCHARGE



3/4" - \$.94'
1" - \$1.13'
1 1/4" - \$1.41'
1 1/2" - \$1.55'
2" - \$2.37'
3" - \$4.70'

"BUMBLE BEE" FERTILIZER SOLUTION



PRICE PER FOOT
1 1/4" - \$2.51'
1 1/2" - \$3.01'
2" - \$3.97'
3" - \$8.67'

100' ROLL PRICE - 10% OFF

"ENFORCER" FERTILIZER SOLUTION



PRICE PER FOOT
1-1/2" - \$4.11'
2" - \$5.57'
3" - \$9.78'

100' ROLL PRICE - 10% OFF

EPDM HOSE with WIRE



1-1/2" - \$5.69'
2" - \$6.37'
3" - \$9.31'

EPDM HOSE



3/8" - \$.61'
1/2" - \$.92'
5/8" - \$1.08'
3/4" - \$1.39'
1" - \$1.90'
1 1/4" - \$4.14'
1 1/2" - \$5.45'
2" - \$6.51'

ROLL PRICE - 10% OFF

PVC FLAT DISCHARGE



1 1/2" \$.59'
2" \$.75'
3" \$ 1.22'

PART NO. 2" HOEPD2
3" HOEPD23

"T-BOLT CLAMPS ALL STAINLESS STEEL

FITS 2" BUMBLE BEE HOSE

PART # OHCT917

\$4.82

FITS 3" BUMBLE BEE HOSE

PART # OHCT922

\$5.12

3/8" NH3 TUBING BY THE ROLL

REGULAR 135psi



\$ 190

500' ROLL
PART #HOEVO38

ORANGE 135psi



\$ 290

500' ROLL
PART #HOEVO38C

SUPER DUTY 250psi



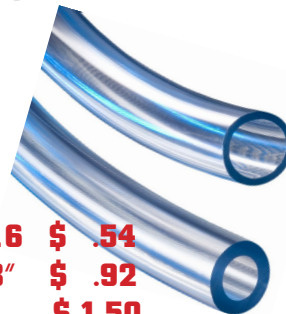
\$ 250

300' ROLL
PART #HOEVO38SD

CLEAR VINYL

Wall Thickness

1/16"
1/8"
1/4"
1/2"



1/2" X 1/16" \$.54
1/2" X 1/8" \$.92
1" X 1/8" \$ 1.50

SIZES

1/8"
1/4"
3/8"
1/2"
5/8"
3/4"
1"
1 1/4"
1 1/2"

REINFORCED VINYL

3/8" 200PSI \$.54'
1/2" 200PSI \$.71'



ROLL PRICE - 10% OFF

REELCRAFT MANUAL HOSE REEL



100' \$ 260
Part # MAC32106

200' \$ 260
Part # MAC32112

325' \$ 275
Part # MAC32118

HOSE REELS

75' MANUAL 3/8" HOSE REEL \$ 125



Part # MACHR-75

REELCRAFT ELECTRIC HOSE REEL



100' \$ 650
Part # MAC32106E

200' \$ 675
Part # MAC32112L12D

325' \$ 730
Part # MAC32118E

METAL STOCK TANK

2' X 2' X 4' \$ 99
Part # MEST2100
2' X 2' X 6' \$ 160
Part # MEST2102
3' X 2' X 10' \$ 280
Part # MEST30210



4' X 2' ROUND \$ 150
Part # MEST2025
6' X 2' ROUND \$ 245
Part # MEST2029
10 X 2' ROUND \$ 495
Part # MEST2037

LIVESTOCK SUPPLIES

REPLACEMENT TRAILER FLOORING 2" D X 8" W CROSS LUG

60" \$ 32 Part # WHATFL5
80" \$ 44 Part # WHATFL7
84" \$ 45 Part # WHATFL70



POLY STOCK TANK

6' X 2' ROUND \$ 225
Part # MESTHP206
8' X 2' ROUND \$ 315
Part # MESTHP208

2' X 2' X 4' \$ 78
Part # MESTHP20204



5606 N US HWY 81
ENID, OK 73701

**5% YEAR END DISCOUNT
ON ALL WAKO MANUFACTURED EQUIPMENT
TAKE DELIVERY IN 2020 OR 2021
CALL FOR PRICING, DELIVERY AND TERMS
FINANCING AVAILABLE**

WAKO XT GRASS FERTILIZER APPLICATOR

10 ROW FIELD READY
WITH NH3 METERING SYSTEM,
HYDRAULIC FOLD

Contintal Meter, Hydraulic Shut-Off, Hoses, Manifolds,
Connectors, Super Duty EVA Hose, Breakaway Coupler.

SPECIAL \$ 20,750

REGULAR (pt.#assxt10) \$ 22,968



**BIG COUNTRY BY WAKO
MOST VERSATILE EQUIPMENT YOU CAN OWN**

**VERTICAL TILLAGE
SM-75**



**CHISEL PLOW WITH
MINI-RIPPERS
4 ROW WAKO XT HARROW**



22" FIELD FINISHER SWEEPS



VERTICAL TILLAGE



**INNOVATIVE
TWO PIECE BULL
SHANK SYSTEM**

MINI-RIPPER



STRIP-TILL



**FIELD FINISHER
IN NO-TILL**



SERVICE AFTER THE SALE
800-299-4300
580-234-3434
sales@wakollc.com
customerservice@wakollc.com

www.wakollc.com

WE JUST BUILD 'EM BETTER



Est. 1962

MADE IN THE USA

5606 N US HWY 81
ENID, OK 73701

TILLAGE

**26" FLAT WING CHISEL SWEEP
HARDFACED BOTTOM**



5/16" THICK
50° STEM ANGLE

\$ 65.43
HARDFACED
Part #TSCA26HFB

**16" CHISEL HEEL SWEEP
PLAIN**



\$ 17.33

50° Stem Angle
1/4" Thick
1/2 Holes
2-1/4" Centers

Part #TSCH16
REG. \$19.25

USE WITH CHISEL SPIKE FOR
PENETRATION AND WEED KILL

**"THE TERMINATOR"
CHISEL SWEEP
5/16" THICK**



Part #TSCAT18

**18" PLAIN
\$22.27**

**"SUPER TERMINATOR"
FIELD CULTIVATOR SWEEP
1/4" Thick, 47° Stem Angle**



9" PLAIN \$ 9.66
Part #TSCA09PL REG. \$10.73
10" PLAIN \$ 9.80
Part #TSCA10PL REG. \$10.89
11" PLAIN \$ 10.99
Part #TSCA11PL REG. \$12.21

9" FIELD CULTIVATOR SWEEP



\$ 7.75

**1/4" THICK
47° STEM ANGLE
PLAIN**

Part #TSFCM09PL

**FIELD CULTIVATOR SWEEP
1/4" Thick, 47° Stem Angle**



\$ 8.88
10" PLAIN
Part #TSFCM10PL
REG. \$9.87

\$ 9.95
11" PLAIN
Part #TSFCM11PL
REG. \$11.06

PLAIN

20" 8 HOLE, 4.5mm

\$ 23.50 Part #TCOP201770LML
REG. 26.12



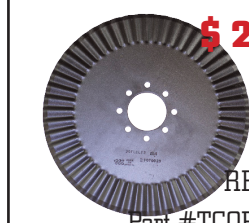
**24" 8 HOLE, 5mm
\$ 36.50**

REG. 40.59
Part #TCOP241970LML

FLUTED

20" 8 HOLE, 4.5mm

\$ 25.50



REG. 28.30
Part #TCOF201770LML

NOTCHED

20" 8 HOLE, 4.5mm

\$ 24.50



REG. 27.43
Part #TCON201770LML

CRUCIBLE

20" 8 HOLE, 4.5mm

\$ 25.50



REG. 28.30
Part #TCO C201770LML

TURBO

20" 8 HOLE, 4.5mm

\$ 50



REG. \$56
Part #TCOT20180LML

**CHROME CAPPED CHISEL
SPIKES**



WAKO MANUFACTURED
2" WIDE, 2 - 1/4" CENTERS

1" RAPTOR \$22.50
REG. \$24.95
REQUIRES 1/2" HEX HEAD BOLT
Part # TCS8XH

**15% OFF
ALL IN STOCK
DISC BLADES**

**DISC BLADES
ROLLABLE**

1 3/4" ROUND HOLE



**22" 7 GA
\$ 24.90**
REG. \$ 29.29
Part #TDBR227134

**24" 1/4"
\$ 43**
REG. \$ 50.66
Part #TDBR243134

TANKS



**PCO
30 - 300 GALLON
AVAILABLE**

**100 GALLON
\$ 184**
REG. \$194
Part # TAP0100



**CONE/INDUCTOR
15 - 3000 GALLON
AVAILABLE**

**55 GALLON
\$ 110**
STAND NOT INCLUDED

REG. \$ 116
Part # TAC0060

**5% OFF
ALL IN STOCK
YELLOW TANKS**

APPLICATOR
HORIZONTAL LEG
ELLIPTICAL
PICKUP
VERTICAL
PCO
CONE

**3000 GALLON VERTICAL
ENDURAPLAS
BLACK
HEAVY WALL
10 YEAR WARRANTY**

\$ 2015
REG. \$ 2272

