

Wako LLC

Tillage

NEW

MAGAZINE
2026

**CHECK OUT OUR
NEW PRODUCTS!**

***Built to Perform in
Any Soil Condition.***

From deep ripping to surface prep, Wako offers a full line of tillage tools engineered for performance, durability, and results. Backed by decades of field-proven design. Wako tillage equipment gives you the strength, versatility, and reliability your operation demands. Choose Wako because every acre deserves your best.

www.wakollc.com

Table of Contents

Pages

Wako History

INTRODUCTION

New Tillage Products

1

8", 10" Rhino Winged Chisel Spike
20" Fallow Sweep with Fertilizer Knife
26" Fallow Master Flat Wing

Heel Sweep

2

w/ 1055 Chisel Plow Knife
w/ Chisel Spike

Penetrators 8", 10", 12", 18"

3-5

High Lift Sweeps 20", 23", 27"

6

Chisel Sweeps 18"

7

Field Cultivator 9", 10", 11"

8

Chisel Spikes & Heel Sweeps

9-10

V-Blades

11-12

Disc Blades

13

Plow Bolts

14

Road Runner

15

Wako Sprayers

16

Big Country Chisel Plow

17-18

Big Country Attachment Options

19

Big Country - VT, Strip-Till, No-Till, Fertilizer Application

20

Flex Harrow Attachment

21

9 Row XT Flex Harrow

22

Soil Commander

23

Big Country Deep Ripper

24

Fertilizer Applicator

25

Tongue Jack's, Replacement Shank & Row Cleaner

26

Universal Fertilizer Knives

27

Big Country Fertilizer Knives

28

www.wakollc.com

FARM & RANCH STORE

Wako History

Wako LLC – Built by Farmers, for Farmers

Founded in 1962 by Charles Bland in Wakita, Oklahoma, Wako began with one goal—solving the equipment challenges farmers faced. When essential parts were hard to find, Wako stepped up, designing durable, dependable tools built to match the dedication of the people who use them.

Since 1986, Wako's headquarters, manufacturing, assembly, and retail operations have been based in Enid, Oklahoma. Today, Wako is the largest fertilizer knife manufacturer in the U.S., also producing tillage tools, custom sprayers, toolbars, and providing expert service.

In 1997, the Big Country Equipment Line was launched to meet the demands of larger horsepower tractors, further proving Wako is more than parts and repairs—we build the big equipment farmers rely on.

With deep Oklahoma roots and nationwide reach, Wako continues to innovate tomorrow's equipment today—helping farmers feed the world.



WAKO EMPLOYEES 2023



WAKO 8" CHISEL PENETRATOR



WAKO ROADRUNNER75 UTV SPRAYER



(BCW) BIG COUNTRY CHISEL PLOW

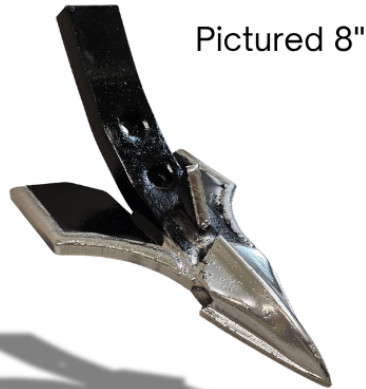


FOUNDER: Charles Bland



WAKO ANHYDROUS APPLICATOR 1975

THE ULTIMATE LIST OF **NEW 2026** **TILLAGE PRODUCTS**



Pictured 8"

PART# TCS8W
PART# TCS10W

NEW

8" or 10" Rhino Winged Chisel Spike

- Hardfaced
- 1" Thick by 2" Wide Spike w/Chrome Cap
- Weight# 8" - 9.4lbs
- Weight# 10" - 10lbs

Bolt Size: 1/2"

Bolt Spacing: 2-1/4"

Bolt Type: Hex Head



Big Country
Field Finish Sweep

NEW

Universal Fit For your Chisel Plow

Sweep Size:
5/16" Thick 20" Width

- Popular Low Disturbance Sweep
- Thin Profile Knife for Easy Pulling
- Chrome Cap & Wako Hardfaced Bottom
- Chrome Cap on Cutting Edge of Knife
- Weight# 16.93lbs

Bolt Size: 1/2"

Bolt Spacing: 2-1/4"

Bolt Type: Plow Bolt



Plain
PART# TSCA26PL

NEW

26" Fallow Master Medium Crown Chisel Sweep

- Plain or Hardfaced Top or Bottom
- Wako Hardfaced with Cap
- 27" Wing Span
- Weight# 15.6lbs

Bolt Size: 1/2"

Bolt Spacing: 2-1/4"

Bolt Type: Plow Bolt

18" Heel Sweep w/1055 Chisel Plow Knife

Heel Sweep Size:

18" - 5/16" Thick

- Apply Anhydrous Fertilizer While Simultaneously Killing Weeds
- Weight# Heel Sweep 9lbs
- Weight# 1055 Knife 6.93lbs

Bolt Size: 1/2"

Bolt Spacing: 2-1/4"

Bolt Type: Plow Bolt



PART# TSCH18
PART# KKNCP1055A

18" Heel Sweep w/1" Chisel Spike

Heel Sweep Size:

18" - 5/16" Thick

Chisel Spike Size:

1" Thick 2" Wide

Chrome Cap: 3" Wide x 5" Length

- Weight# Heel Sweep 9lbs
- Weight# Chisel Spike 7.4lbs

Bolt Size: 1/2"

Bolt Spacing: 2-1/4"

Bolt Type: Hex Head



PART# TSCH18
PART# TCS8XH

WHY CHOOSE WAKO

*“Breaking Ground
with Serious Tillage.”*

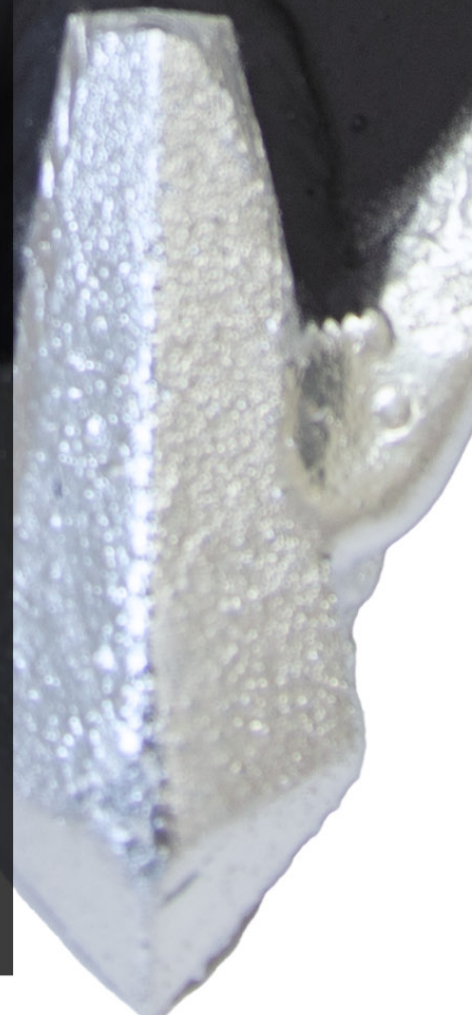
Wako uses a specialized steel that is Abrasion Resistant, long-wearing, and chrome-hardened—resulting in a robust material built to handle demanding applications where durability and wear resistance are essential.

When it comes to tillage tools, durability isn't just a bonus—it's a necessity. Wako's industry-leading hardfacing is what puts us a cut above the rest. Applied in-house by skilled craftsmen, our hardfacing isn't an afterthought—it's a precision process designed to drastically extend the life of your sweeps, knives, and wear points.

We don't just lay down more material—we do it smarter. Wako uses custom-blended hardfacing wire and strategic placement to reinforce high-wear areas without sacrificing performance or causing drag. The result? Tools that hold their edge longer, work harder, and keep you in the field—not in the shop.

And for even greater durability, Wako offers a hardfaced top with chrome cap, giving you superior resistance against wear and abrasion where it matters most.

www.wakollc.com



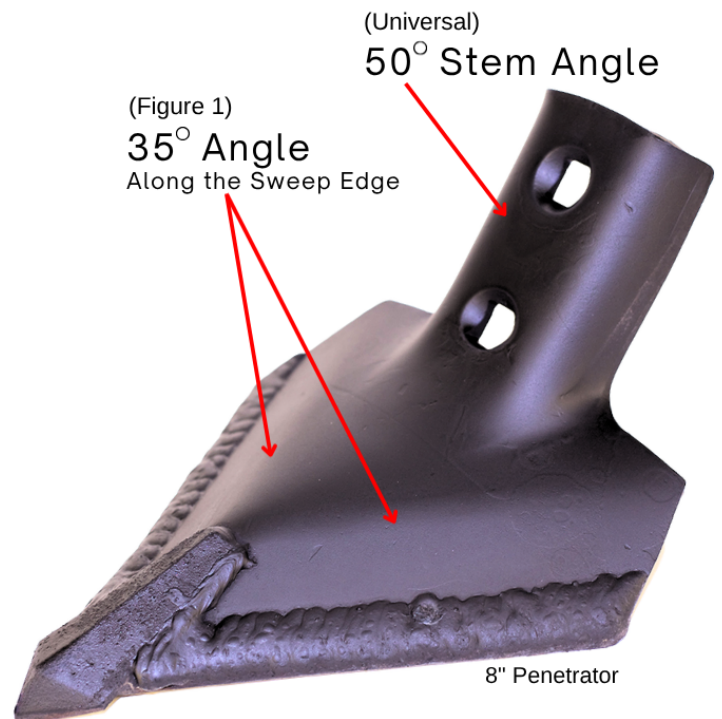


THE WAKO DIFFERENCE

Abrasion Resistant - Long Wearing

Wako's Universal Chisel Penetrators are built tough with farmers in mind and engineered to fit your existing chisel plow, deliver reliable depth, and shatter soil for better root growth and water infiltration. The 35°(figure 1) sweep edge penetrates more aggressively than conventional sweeps, while boiling soil away from the plow bolts and shank to reduce wear and extend life. Each Penetrator receives a Chrome Cap Nose and then premium hardfacing for maximum durability.

*Wako Hardfacing:
"Because Downtime Isn't
an Option."*



www.wakollc.com

WAKO PENETRATORS

YouTube
Video



8" Penetrator

- 50° Stem Angle
- 5/16" Thick
- 1/2" Plow Bolt
- 2-1/4" Centers
- Weight# 5.1lbs

Bolt Size: 1/2"
Bolt Spacing: 2-1/4"
Bolt Type: Plow Bolt

PART# TSCP08HHFC

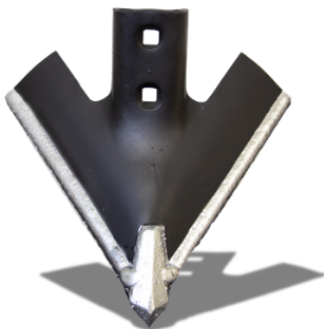


10" Penetrator

- 50° Stem Angle
- 5/16" Thick
- 1/2" Plow Bolt
- 2-1/4" Centers
- Weight# 5.7lbs

Bolt Size: 1/2"
Bolt Spacing: 2-1/4"
Bolt Type: Plow Bolt

PART# TSCP10HHFC



12" Penetrator

- 50° Stem Angle
- 5/16" Thick
- 1/2" Plow Bolt
- 2-1/4" Centers
- Weight# 7.3lbs

Bolt Size: 1/2"
Bolt Spacing: 2-1/4"
Bolt Type: Plow Bolt

PART# TSCP12HHFC



18" Penetrator

- 50° Stem Angle
- 5/16" Thick
- 1/2" Plow Bolt
- 2-1/4" Centers
- Weight# 10lbs

Bolt Size: 1/2"
Bolt Spacing: 2-1/4"
Bolt Type: Plow Bolt

PART# TSCP18HHFC

WAKO HIGH LIFT SWEEPS



NEW

20" High Crown High Lift Sweep

- 50° Stem Angle
- 5/16" Thick
- 1/2" Plow Bolt
- 2-1/4" Centers
- Weight# 10.4lbs

Bolt Size: 1/2"

Bolt Spacing: 2-1/4"

Bolt Type: Plow Bolt

PART# TSCP20HHFC



NEW

23" High Crown High Lift Sweep

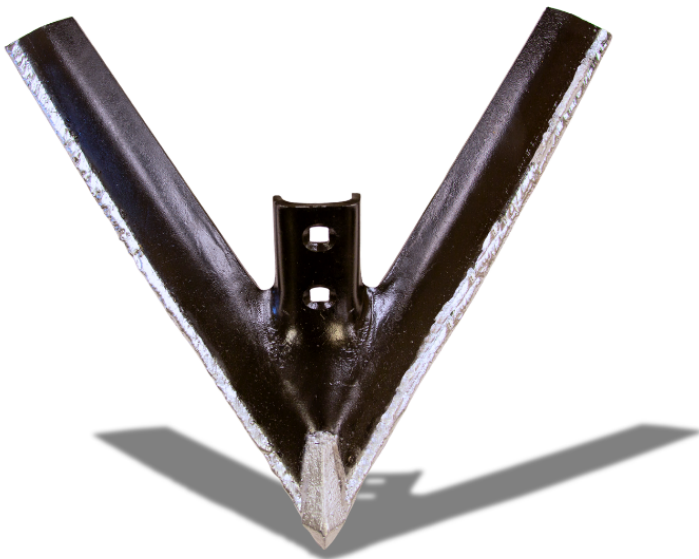
- 50° Stem Angle
- 5/16" Thick
- 1/2" Plow Bolt
- 2-1/4" Centers
- Weight# 12.71lbs

Bolt Size: 1/2"

Bolt Spacing: 2-1/4"

Bolt Type: Plow Bolt

PART# TSCP23HHFC



NEW

27" High Crown High Lift Sweep

- 50° Stem Angle
- 5/16" Thick
- 1/2" Plow Bolt
- 2-1/4" Centers
- Weight# 14.85lbs

Bolt Size: 1/2"

Bolt Spacing: 2-1/4"

Bolt Type: Plow Bolt

PART# TSCP27HHFC

CHISEL SWEEPS

18" STANDARD OR LOW CROWN

PLAIN OR HARDFACED/CHROME CAP NOSE

Wako Medium Crown Chisel Sweep

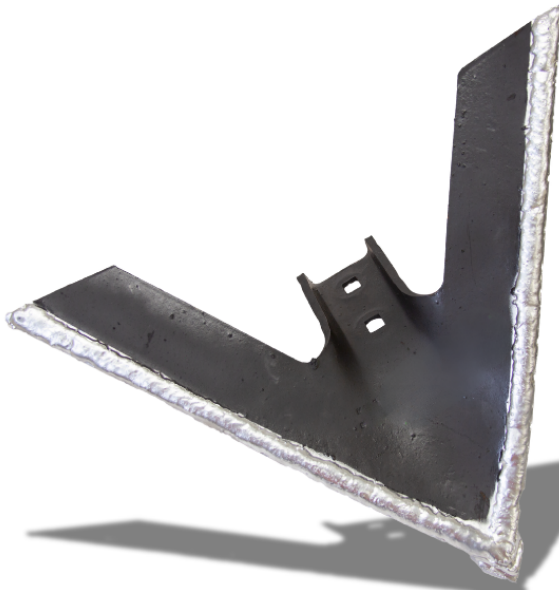


PLAIN

Medium Crown
50° STEM ANGLE

5/16" THICK

PART NUMBER	DESCRIPTION
TSCMF18HPL	18" Chisel Sweep Plain
*NOT PAINTED HARDFACED/CHROME CAPPED NOSE STANDARD CROWN 50°STEM ANGLE	
5/16" THICK	
PART NUMBER	DESCRIPTION
TSCMF18HHFC	18" Chisel Sweep HF Bottom/Capped



HARDFACED BOTTOM
WITH CHROME CAP

Wako Low Crown Chisel Sweep

PLAIN

Low Crown
50° STEM ANGLE

5/16" THICK

PART NUMBER	DESCRIPTION
TSCMX18HPL	18" LC Chisel Sweep Plain
*NOT PAINTED HARDFACED/CHROME CAPPED NOSE LOW CROWN 50°STEM ANGLE	
5/16" THICK	
PART NUMBER	DESCRIPTION
TSCMX18HHFC	18" LC Chisel Sweep HF Bottom/Capped

FIELD CULTIVATOR SWEEPS

PLAIN OR HARDFACED

Wako Field Cultivator Sweep



PLAIN

1/4" THICK
47° STEM ANGLE

PART NUMBER	DESCRIPTION
TSFCM09PL	9" Field Cultivator Sweep 1/4" Plain
TSFCM10PL	10" Field Cultivator Sweep 1/4" Plain
TSFCM11PL	11" Field Cultivator Sweep 1/4" Plain

Stealth Field Cultivator Sweep



CHROME CAPPED AND HARDFACED BY WAKO

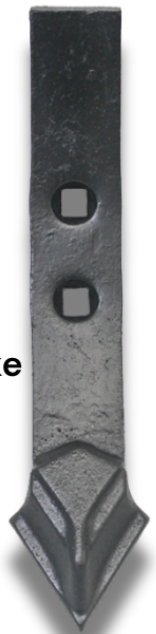
1/4" THICK
47° STEM ANGLE

PART NUMBER	DESCRIPTION
TSFCM09HF	9" Field Cultivator Sweep 1/4" Hardfaced
TSFCM10HF	10" Field Cultivator Sweep 1/4" Hardfaced
TSFCM11HF	11" Field Cultivator Sweep 1/4" Hardfaced

STEALTH
CHROME CAP



CHISEL SPIKES & HEEL SWEEPS



Talon Chisel Spike
Part # TCS8

Wako Chisel Spikes

CHROME CAPPED

Wako Manufactured
2" WIDE
2-1/4" BOLT HOLE CENTERS

PART NUMBER	DESCRIPTION
TCS8	Talon Chisel Spike 3/4" Thick, Capped (Requires 1/2" Plow Bolt)
TCS8XH	Raptor Chisel Spike 1" Thick, Capped (Requires 1/2" Hex Bolt)
TCS8W	Rhino Winged Chisel Spike 1" Thick, Capped (Requires 1/2" Plow Bolt)
KKNCP955A	1055 Chisel Spike Weight 6.93lbs (Requires 1/2" Plow Bolt)

RAPTOR CHISEL SPIKE
Heaviest on the Market

1055 Chisel Spike

PULLS EASIER,
SMALLER DIRT CLODS
1" x 2" Spring Steel

Ground
Fracturing Foot

2" Wide

Part # KKNCP1055A

Wako Chisel Heel Sweep

5/16" THICK
50° STEM ANGLE LONG WEARING BORON STEEL AR-1

PART NUMBER	DESCRIPTION
TSCH18	18" Chisel Heel Sweep Plain
TSCH18HF	18" Chisel Heel Sweep Hardfaced



WHY CHOOSE A WAKO HEEL SWEEP W/CHISEL SPIKE

Moisture Retention

“Do more in a single pass.”

Abrasion Resistant - Long Wearing

The Wako Heel Sweep with Chisel Spike combines two proven tools into one durable design. The chisel spike delivers deep soil penetration to break hardpan and improve while the heel sweep provides effective weed control. Together, they create a versatile option for farmers. The heel sweep with chisel spike is built to stand up to demanding field conditions and deliver consistent performance. It's a cost-effective solution that saves time, reduces equipment wear, and prepares the soil for stronger yields.

When you need depth, durability, and efficiency, Wako's Heel Sweep with Chisel Spike delivers all three.

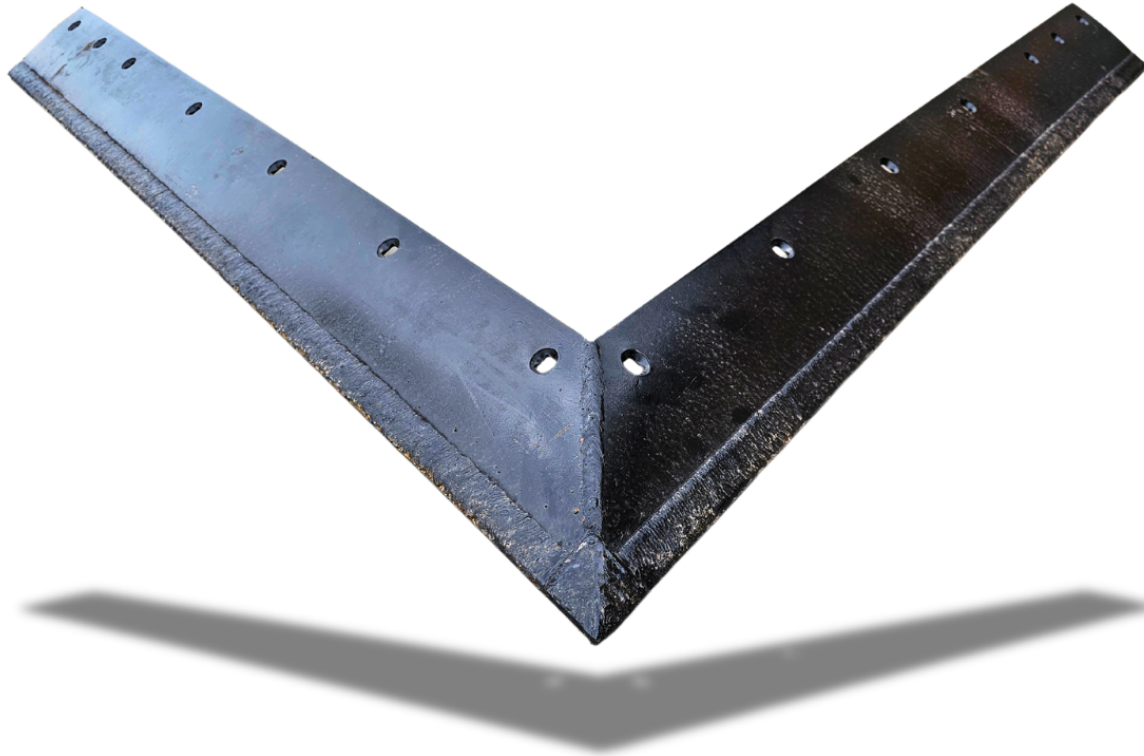
Heel Sweep also
used with a
Wako Fertilizer Knife.

www.wakollc.com

WAKO V-BLADES

SWEEP PLOW BLADES

HARDFACED



SIZES: 5', 5-1/2', 6', 6-1/2', 7'

HARDFACED NOSE Hardfaced Top or Bottom	
PART NUMBER	DESCRIPTION
TSWB5HFT	5' Top HF
TSWB5HFB	5' Bottom HF
TSWB55HFT	5-1/2' Top HF
TSWB55HFB	5-1/2' Bottom HF
TSWB6HFT	6' Top HF
TSWB6HFB	6' Bottom HF
TSWB65HFT	6-1/2' Top HF
TSWB65HFB	6-1/2' Bottom HF
TSWB7HFT	7' Top HF
TSWB7HFB	7' Bottom HF

SIZES: 5', 5-1/2', 6', 6-1/2', 7'

CHROME CAPPED NOSE Hardfaced Top or Bottom		(OPTION)
PART NUMBER	DESCRIPTION	
TSWB5HFCTC	5' Top HF	
TSWB5HFBC	5' Bottom HF	
TSWB55HFCTC	5-1/2' Top HF	
TSWB55HFBC	5-1/2' Bottom HF	
TSWB6HFCTC	6' Top HF	
TSWB6HFBC	6' Bottom HF	
TSWB65HFCTC	6-1/2' Top HF	
TSWB65HFBC	6-1/2' Bottom HF	
TSWB7HFCTC	7' Top HF	
TSWB7HFBC	7' Bottom HF	



WAKO V-BLADES

Abrasion Resistant - Long Wearing

For over 60 years, Wako has built quality Agricultural products using proven methods farmer's trust.

When the industry faced shortages in 2020, farmers turned to Wako. That demand drove extensive research, development, and equipment investment, resulting in a V-Blade we're proud to supply to the Ag community. Everything we do reflects our motto: helping farmers feed the world.

Our blades are made from abrasion-resistant, long-wearing steel and then we use premium hard facing. A higher-cost component we've thoroughly tested, refined, and proven in the field. Wako hard facing isn't cheap because longevity isn't cheap, but our V-Blades are priced right, delivering exceptional value through longer life and reduced downtime.

*"Durability Meets
Performance."*

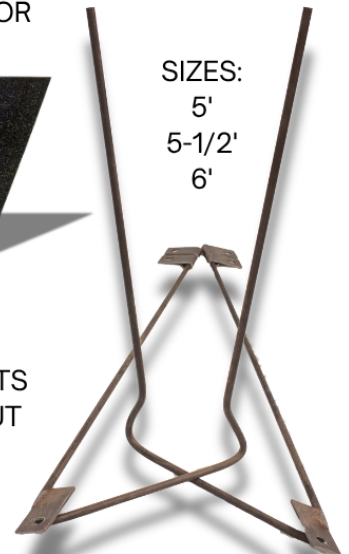
V SWEEP
SHANK PROTECTOR



PART# TSWP

NH3 SWEEP TUBES

SIZES:
5'
5-1/2'
6'



HEAVY DUTY BOLTS
W/OVERSIZED NUT



PART# KTU55 5' & 5-1/2'
PART# KTU6 6'

www.wakollc.com

DISC BLADES

(ROLLABLE)

LONG WEARING, ABRASION RESISTANT, CHROME BORON

Standard Concave

SIZE	THICKNESS
18"	7 Gauge
20"	6 Gauge
22"	3 Gauge
24"	6 Gauge
24"	3 Gauge
26"	3 Gauge

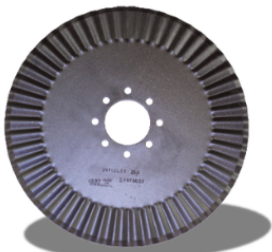


Coultter Blades

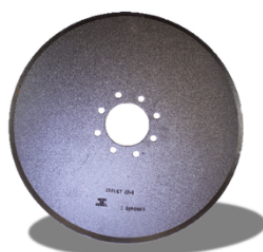
Plain/ Fluted/ Crucible/ Turbo/ Wavy

SIZE	THICKNESS	DESCRIPTION
17"	4.0mm	Wavy, 4 Hole
18"	4.5mm	Plain, 4 Hole
20"	4.5mm	Plain, 8 Hole
20"	4.5mm	Fluted, 8 Hole
20"	4.5mm	Crucible, 8 Hole
20"	5mm	Turbo, 4 Hole
22"	4.5mm	Plain
24"	5.0mm	Plain, 8 Hole
24"	6.0mm	Heavy Single Bevel, 6 Bolt

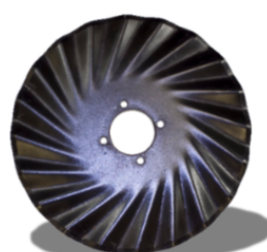
Fluted Coultter



Plain Coultter



Turbo Coultter



Crucible Coultter



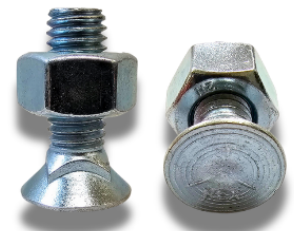
PLOW BOLTS

LOCK WASHER & NUT

PACKAGED PLOW BOLTS / AVAILABLE IN BULK

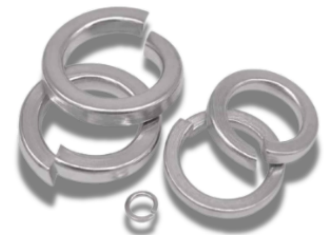
50 each, Grade 5 Plow Bolt and Nut
Boron Steel for longer headwear.

PART NUMBER	SIZE
FPB38114PACK	3/8" X 1-1/4"
FPB38112PACK	3/8" X 1-1/2"
FPB76114PACK	7/16" X 1-1/4"
FPB76112PACK	7/16" X 1-1/2"
FPB76134PACK	7/16" X 1-3/4"
FPB12114PACK	1/2" X 1-1/4"
FPB12134PACK	1/2" X 1-3/4"
FPB12212PACK	1/2" X 2-1/2"
FPB12234PACK	1/2" X 2-3/4"
FPB123PACK	1/2" X 3"



50 each, Grade 5 Plow Bolt and Over Sized Nut
Boron Steel for longer headwear.

PART NUMBER	SIZE
FPB12112PACK0SN	1/2" X 1-1/2"
FPB12134PACK0SN	1/2" X 1-3/4"



50 each, Grade 5 Plow Bolt and Whiz Nut
Boron Steel for longer headwear.

PART NUMBER	SIZE
FPB38114PACKWHI	3/8" X 1-1/4"
FPB38112PACKWHI	3/8" X 1-1/2"
FPB76114PACKWHI	7/16" X 1-1/4"
FPB76112PACKWHI	7/16" X 1-1/2"
FPB76134PACKWHI	7/16" X 1-3/4"
FPB12114PACKWHI	1/2" X 1-1/4"
FPB12134PACKWHI	1/2" X 1-3/4"
FPB12212PACKWHI	1/2" X 2-1/2"
FPB12234PACKWHI	1/2" X 2-3/4"
FPB123PACKWHI	1/2" X 3"



WAKO ROADRUNNER75 UTV SPRAYER



The **Wako RoadRunner75** is a 75-gallon sprayer designed to fit in the back of your UTV. Available in gas or electric models with electronic cab controls, it's built for convenience and performance. Whether you're spot spraying, working fence lines, yards, pastures, food plots, or hard-to-reach areas, the RoadRunner75 is up for the job. Comes with boomless nozzles and includes a hand wand for spot spraying. Durable, easy to operate, and ready to go wherever you do.

WAKO SPRAYERS

**BIG OR SMALL
WE HAVE IT ALL!**

WAKO SPRAYER OPTIONS:

- Skid Sprayer
- Cattle Sprayer
- Trailer Sprayer
- 3 Point Sprayer
- Fire Fighter Sprayer
- Drone Trailer Sprayer
- Semi-Trailer Sprayer
- Mini-Mite ATV Sprayer
- Mini-Mite Trailer Sprayer
- Roadrunner75 UTV Sprayer

LIVESTOCK SPRAYER



Wako Livestock Sprayer is more than just for cattle. Easily detach the cattle sprayer arm and attach booms to suit your spraying needs. Versatile, efficient, and built for multiple uses.

TRAILER SPRAYER



Wako's Trailer Sprayer with Fire Fighter Kit is built for versatility purposes. Use it for fire control, weed and pest spraying, dust suppression, watering, and more.

ROADRUNNER75 UTV/SPRAYER

Key Features:

All of Wako RoadRunners Include:

- 75 Gallon AceTank
- 30' EPDM Hose w/Reel
- Handwand
- Banjo Fittings
- Cab Access Control
- 30' Boomless Nozzle Kit
- Swivel Boom w/Boomless Nozzles

Optional:

- Electronic Cab Controls
- Foam Marker System
- 12', 18', 22', Steel Boom w/Dripless Nozzles

Optional (Gas Only):

- Cattle Sprayer Attachment
- Fire Fighter Kit



UTV CAB ENCLOSURE
NEVER LEAVE YOUR CAB
ELECTRIC CAB CONTROLS



**UPGRADE
OPTION:**

BOOMLESS NOZZLES



Gas Powered Features:

Honda EngineGX1605.5HPW/Ace Centrifugal Pump

Electric Features:

5.3GPMRemcoDiaphragmPumpw/Pressure Switch

FOAM MARKER SYSTEM



FOAM MARKER



PART#

SIZE

ASRW075E	75 GALLON 12VELECTRIC 5.3 GPM
ASRW075ECC	75 GALLON 12V ELECTRIC 5.3 GPM W/CAB CONTROL
ASRW075	75 GALLON GAS 5.5HP HONA GX 160
ASRW075GCC	75 GALLON GAS 5.5HP HONA GX 160 W/CAB CONTROL

BIG COUNTRY

LINE OF EQUIPMENT



BIG COUNTRY CHISEL PLOW

26'-62' BCW FRAME WITH BULL SHANK
SYSTEM SO MANY OPTIONS:

- DEEP TILL - MINI-RIPPER
- PRIMARY TILL - 50° ADAPTOR AND RAPTOR SPIKE
- FULL TILL - 50° ADAPTOR AND PENETRATOR SWEEP OR STANDARD CHISEL SWEEP
- MINIMUM TILL - 20" OR 22" FIELD FINISHER SWEEP (NH3 OPTION)

Also Available

- VERTICAL TILL - SOIL MANAGER 75 (SM75)
- STRIP-TILL - RZM (AVAILABLE IN 12, 16, 18, 24 ROWS , 30" CENTER)
- NO-TILL - NTO II COULTER, OFFSET APPLICATION
- FERTILIZER APPLICATION - KNIVES, (DUAL TUBES & SEALERS OPT.)

Vertical Till SM75



Penetrators



Customer:
"I wouldn't change a thing"

BIG COUNTRY CHISEL PLOW



*BIG COUNTRY
CHISEL PLOW
FIELD VIDEO*

Big Country Wagon
(BCW) Mini-Rippers
Wako 4 Row Harrow



(BCW) 4"X 6"FRAME: Tough enough to withstand high horsepower tractors.

Mini-Rippers



22" Field Finisher Sweeps



BIG COUNTRY CHISEL PLOW

(BCW) OPTIONS

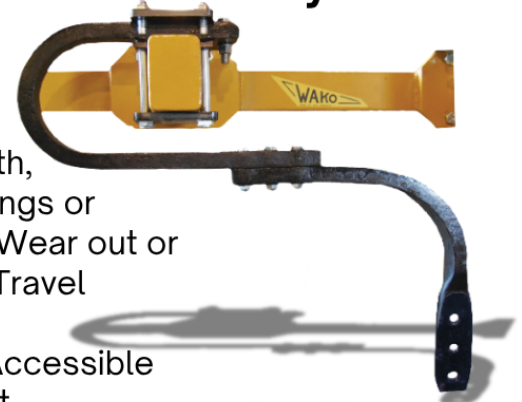


Mini-Ripper

Renripper Point Chrome Cap

- Grazed out wheat pasture
- First pass after harvest
- Maximum Depth
- Opens soil for moisture intake

Bull Shank Assembly



Extra Strength,
No Pins, Springs or
Bushings to Wear out or
Break Extra Travel
Movement
2 Piece for Accessible
Replacement

Chisel (BCW) 50° Adaptor Receives Any 50° Sweep or Spike

**18" Chisel Sweep
or any Chisel Sweep**

- Full Till
- Weed Kill

Chisel Spike

- Primary Till
- Ripping

**Penetrators
8", 10", 12", 18",
20", 23", 27"**

- Full Till
- Weed Kill

SIDE VIEW (points to side view of sweep)
FRONT VIEW (points to front view of sweep)
Bolts to the Bull Shank (points to bolts on sweep)
Bolt on your Sweep or Spike (points to bolt on sweep)
50° ADAPTOR (points to adaptor on spike)
50° ADAPTOR (points to adaptor on penetrator)

PART # KSHC1200A

Field Finisher/ Fallow Sweep

(BCW) 20" or 22" Field Finish/Fallow Sweep Capped and Hardfaced Bottom



PART # KKNC560SAHHFC 20"
PART # KKNC561SAHHFC 22"

(BCW) Frog for 20" or 22" Sweep



PART # KKNC560BC NO TUBE
PART # KKNC560BCNH3 3/8" NH3 TUBE

(BCW) FF/FS Complete Unit

Weed Kill Leaves 90% Residue on Surface After Last Application for NH3 Use



BIG COUNTRY

VT, STRIP-TILL, NO-TILL, FERTILIZER APPLICATOR (BCW) OPTIONS



Vertical Tillage



SM-75

Soil Manager cuts every 7.5 inches High Speed Process.

- Aerates
- Chopping
- Water Absorption
- Seedbed Preparation

20" 8 Wave Blade



20" Notched



Big Country Fertilizer Knives Many Choices Use in Grass or Field.

- Minimal Soil Disturbance
- Seals Well Vapor Tube



- Aggressive Soil Disturbance
- Seals Well
- Works in wet Conditions



- Low Soil Disturbance
- Strip-Till
- No Continuous Slot

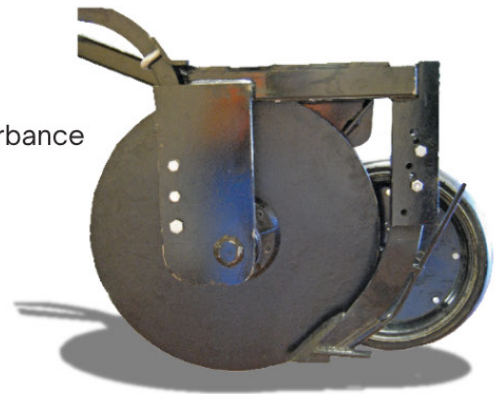
See pg 28

FOR A COMPLETE LINE OF KNIVES SEE OUR
FERTILIZER KNIVES CATALOG

No-Till Offset II Units



- No-Till
- Minimal Disturbance
- High Speed



FLEX HARROW ATTACHMENT

FOR YOUR FIELD CULTIVATOR OR CHISEL



Flex Harrow Attachment



Every field
deserves soil
perfection.

So we made our harrows compatible with all machines.



Long lasting chrome insert on every tine.



Need for Quote:

- Implement Type
- Frame Size and Width
- Section Size
- Number of Shanks per Section
- Shank Spacing

9 ROW XT FLEX HARROW



9 Row Wako XT Flex Harrow



Long Lasting Chrome Insert on Every Tine.

9 ROW HARROW
FIELD VIDEO



PART NUMBER	SIZE
Z5000-25	25'
Z5000-28	28'
Z5000-31	31'
Z5000-33	33'
Z5000-34	34'
Z5000-36	36'
Z5000-39	39'
Z5000-42	42'
Z5000-45	45'
Z5000-51	51'

Heaviest Harrow Available



Available in Widths of 25'-51'

SOIL COMMANDER



Soil Commander - Your go to Implement



SIZES	25'	31'	37'	41'	51'
-------	-----	-----	-----	-----	-----



SOIL COMMANDER
FIELD VIDEO

- High Speed Leveling
- Chemical Incorporation
- Excellent Seedbed Preparation
- Use all Season-Primary Tillage to Planting
- Pull Independently or in Tandem with Disc, Chisel, BCW
- More Versatile than a 16 Bar Harrow

Penetrating Rolling Blades Pulverizes Clods



Hydraulic Depth Adjustment On the go Adjustment



Wako 4 Row Harrow The Ultimate Long Life Harrow



BIG COUNTRY DEEP RIPPER



NEW WAKO DEEP RIPPER

DEEP RIPPER
PLAY LIST



UTILIZING OUR HEAVY FRAME
WE HAVE DEVELOPED A
RIPPER ON 24" CENTERS

- Double "C" Shank
- Easy Pulling
- 1/2" Blade
- High Chrome Insert on Leading Edge
- 2" Wide, 25° for Hardpan Lift
- Replaceable High Chrome Point
- 5/8" x 6" High Tensile Strength Steel



FERTILIZER APPLICATOR



HD Grass Aerator or Fertilizer Applicator

8 & 10 ROW

**PASTURE
AERATOR**



- Continuous Slot to Absorb more Water
- Coulter cuts Runners for Healthier Plant
- Leaves Pasture Smooth
- Makes Happier Cows

FERTILIZER APPLICATOR
FIELD VIDEO



Liquid Fertilizer System / NH3 System / Hitch for Harrow /
4 x 8 Press Wheel Assembly



NEW

Heavy Shank

2" Wide by 1-1/2"

- Swiveling Coulter Assembly
- Spring Loaded Press Wheel
- Easy Hook-Up Hitch
- Hydraulic Fold
- Easy Transportation
- Dual Guage Wheels

NEW

**Rubber Torsion
Coulter Units**



TONGUE JACK'S, REPLACEMENT SHANKS & ROW CLEANER

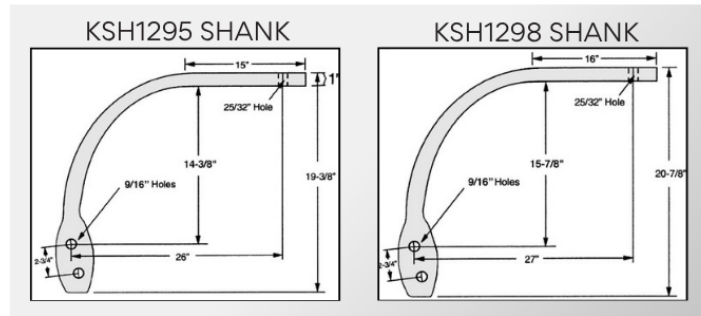
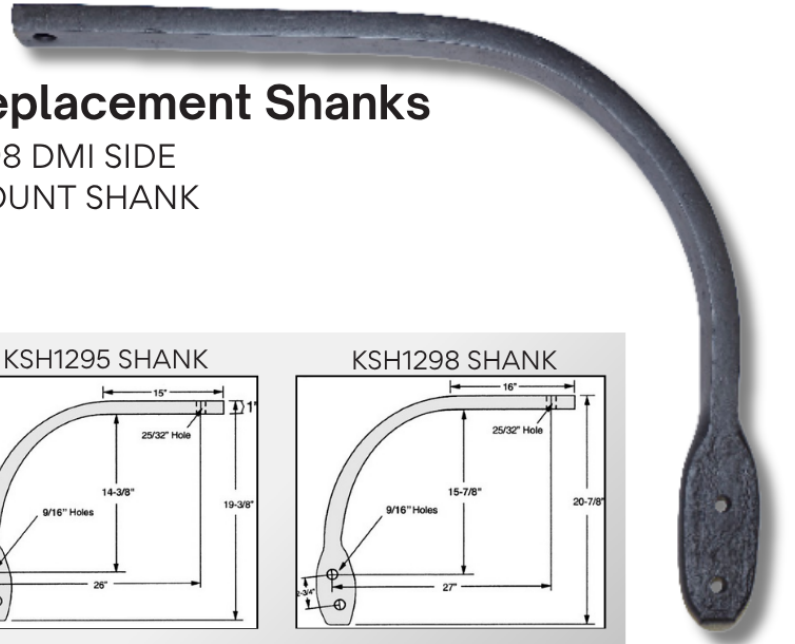
Tongue Jacks

PART#	DESCRIPTION
MTJA15T2	JACK A-FRAME 15" 5000# TW RD
MTJ10T5TW	JACK TUBE MT 10" 5000# TW RD
MTJ15T5TW	JACK TUBE MT 15" 5000# TW RD
MTJ10T5SW	JACK TUBE MT 10" 5000# SW RD
MTJ10B1SW	JACK BOLT MT 10" 1000# SW RD
MTJ15T7S	JACK TUBE MT 15" 5000# SW RD

PART#	DESCRIPTION
KSH1295 SHANK	BLUE JET SIDE MOUNT DMI
KSH1298 SHANK	SIDE MOUNT (PICTURED)

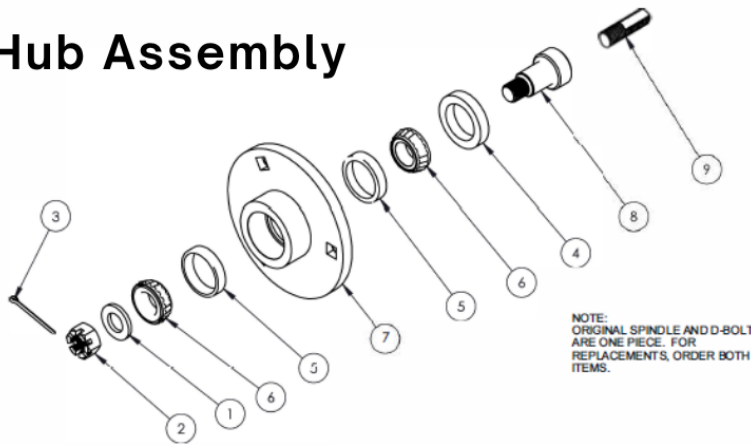
Replacement Shanks

1298 DMI SIDE
MOUNT SHANK



Row Cleaner Replacement Parts

Hub Assembly



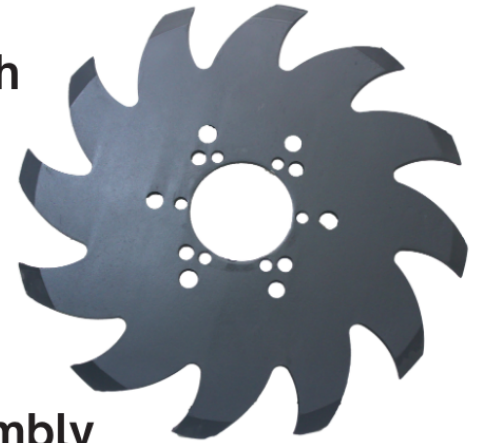
NOTE:
ORIGINAL SPINDLE AND D-BOLT
ARE ONE PIECE. FOR
REPLACEMENTS, ORDER BOTH
ITEMS.

HUB IS 3-BOLT ON 5.00" BOLT CIRCLE, WITH 2.76" PILOT

ITEM NO.	PART NO.	DESCRIPTION	QTY.
1	FFW34	WASHER 3/4 FLAT	1
2	FNT34S	NUT 3/4- 16 CASTELLATED	1
3	QPPC182	COTTER PIN 1/4 X2	1
4	WHB14970	SEAL REPLACEMENT	1
5	WHB44610	BEARING RACE L44610	2
6	WHB4443	BEARING CONE L44643	2
7	WHBHUB-WAKO-2	HUB ONLY	1
8	WHBHUB-WAKO2	SPINDLE	1
9	Z2775Y	D BOLT	1

PART NO.	DESCRIPTION
WHB2488-ASM	HUB ASSY, 3-BOLT

Sharktooth



Hub Assembly



FERTILIZER KNIVES



Wako Universal Fertilizer Knives - Hundreds of Options

**MAG 40
W/BTS**



Part # KKNCA40AS

MAG 50



Part # KKNC50A

KF-500



Part # KKNK500A

MOPHER



Part # KKNK100A

WACO38



Part # KKNCO50A

WW50



Part # KKNWW50A

**405 FIELD
CULTIVATOR**



Part # KKNFC405A

755 CHISEL PLOW



Part # KKNCP755A

1055 CHISEL PLOW



Part # KKNCP1055A

855 CHISEL PLOW



Part # KKNFCP855A

BIG COUNTRY FERTILIZER KNIVES



**BCW
GOPHER**



Part # KKNKG60A

**BCW
MAG 50**



Part # KKNC60A

**BCW XL MAG 50
EXTRA LONG**



Part # KKNC65A

**BCW
RAZOR**



Part # KKNRZ60A

**BCW
MT-50**



Part # KKNMT60A

**BCW XL
MT-50**



Part # KKNMT65A

**BCW MAG 50
W/BATWING &
SPLATTER PLATE**



**BCW MAG 50
ROCK HOPPER**



**BCW MAG 50
VAPOR**



2026

NEW TILLAGE CATALOG

MANUFACTURING QUALITY AG EQUIPMENT SINCE 1962
FAMILY OWNED AND OPERATED

WAKOLLC.COM



YOUTUBE



FACEBOOK



TIK TOK



800-299-4300 / 580-234-3434

PARTS COUNTER - EXT. 407, 409

PARTS COUNTER EMAIL - STORE@WAKOLLC.COM

5606 N. US 81 HWY, ENID, OK 73701

www.wakollc.com

