



SALES GOOD THROUGH AUGUST 31ST, 2022 OR WHILE SUPPLIES LAST

PRSRST STD  
US POSTAGE  
PAID  
WEBSTER CITY, IA  
PERMIT NO. 27



Every field  
deserves soil  
perfection.

## FLEX HARROW ATTACHMENT FOR YOUR IMPLEMENT

NEEDED TO FIT YOUR IMPLEMENT:  
IMPLEMENT TYPE  
FRAME SIZE AND WIDTH  
SECTION SIZE  
NUMBER OF SHANKS PER SECTION  
SHANK SPACING

## WAKO HARROW



9 ROW WAKO XT FLEX HARROW  
IN STOCK



# NEW & USED IN STOCK

## BCW BIG COUNTRY

BRING BACK THE JOY TO FARMING!

### BCW VERSATILE TOOL OPTIONS:



DEEP TILL  
MINI RIPPER



PRIMARY TILL  
SPIKE



FULL TILL  
PENETRATOR



MINIMUM TILL  
FALLOW SWEEP



FULL TILL  
18" SWEEP

MORE INFO

BCW	SIZE
160" OR 190' CENTER	31' TO 60' 3 OR 5 SECTION

ALSO AVAILABLE:

- VERTICAL TILL
- STRIP - TILL
- NO - TILL
- FERTILIZER APPLICATION



# CALL NOW

FOR AVAILABILITY  
& BEST PRICE!  
(800) 299-4300  
(580) 234-3434

### CHROME INSERT ON EVERY TINE

MULTI-PURPOSE  
HEAVIEST ON THE MARKET  
LONG LIFE  
LOW MAINTENANCE



### HYDRAULIC FOLD



**Big Country**  
by WAKO

WE JUST BUILD'EM BETTER

5606 N. US HWY 81, ENID, OK. 73701  
SALES@WAKOLLC.COM  
WWW.WAKOLLC.COM

**Wako**  
EST. 1962



## CHISEL SWEEPS

### CHISEL HEEL SWEEP



TSCH18 18" HEEL SWEEP **\$ 30.58**  
**PLAIN**

Use with chisel spike or NH3 Knife. Sold separately.

### 18" STAY WIDE STANDARD CROWN 5/16 THICK



TSCA18PL **PLAIN** **\$ 26.83**  
**HARDFACED WITH CAP**  
TSCA18HFB HF BOTTOM **\$48.01**

### 18" TERMINATOR STANDARD CROWN



5/16" THICK **PLAIN** **\$28.46**  
TSCAT18

## CHROME CAP CHISEL SPIKES WAKO MANUFACTURED



### 3/4" TALON

**\$ 26**

FULL 2" WIDE  
3/4" THICK  
3" X 4" CHROME CAP  
OVERALL LENGTH 14"  
USES 1/2" PLOW BOLT

WEIGHT: 5.42#

PART # TCS8



### 1" RAPTOR

**\$ 31.55**

FULL 2" WIDE, 1" THICK  
3" X 5" CHROME CAP  
OVERALL LENGTH 15 1/2"  
USES 1/2" HEX CAP BOLT

WEIGHT: 7.4#

PART # TCS8XH

## WAKO PENETRATOR CHISEL SWEEPS

5/16" THICK  
CHROME CAPPED NOSE  
HARDFACED  
USES 1/2" PLOW BOLT

**CAPPED AND  
HARDFACED**

**8" \$ 36.86**

PART # TSCP08HHFC

**10" \$ 38.81**

PART # TSCP10HHFC



1-1/2" X 3-1/2" CHROME CAP

## 18" LOW CROWN CHISEL SWEEPS



**\$ 32**  
**PLAIN**

**\$ 55**

**HARDFACED WITH CAP**  
PART # TSCMX18HPL  
PART # TSCMX18HHFC

## FIELD CULTIVATOR SWEEPS

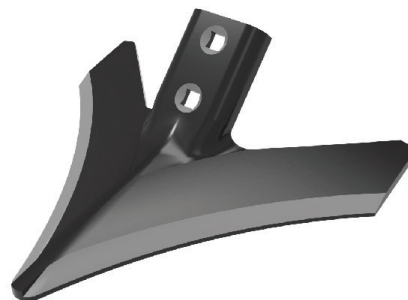
### FIELD CULTIVATOR SWEEP 47° STEM ANGLE



**PLAIN**

PART #	DESCRIPTION	PRICE
TSFCM09PL	9" PLAIN	<b>\$ 11.04</b>
TSFCM10PL	10" PLAIN	<b>\$ 12.04</b>
TSFCM11PL	11" PLAIN	<b>\$ 13.57</b>
<b>HARDFACED</b>		
TSFCM09HF	9" HARDFACED	<b>\$ 21.16</b>
TSFCM10HF	10" HARDFACED	<b>\$ 24.87</b>
TSFCM11HF	11" HARDFACED	<b>\$ 26.60</b>

### TURBO FIELD CULTIVATOR SWEEP 47° STEM ANGLE



PART #	DESC	PRICE
TSCA09PL	9" PLAIN	<b>\$ 12.72</b>
TSCA10PL	10" PLAIN	<b>\$ 13.90</b>
TSCA11PL	11" PLAIN	<b>\$ 14.48</b>

## DISC BLADES AND COULTERS

### DISC BLADES (Rollable) STANDARD CONCAVE

PART NUMBER	SIZE	THICKNESS	HOLE SIZE	PRICE
TDBR187P	18"	7 Gauge	Cut to Fit	<b>\$ 40</b>
TDBR227114	22"	7 Gauge	1-1/4 Square	<b>\$ 52</b>
TDBR227112	22"	7 Gauge	1-1/2" Round	<b>\$ 54</b>
TDBR246P	24"	6 Gauge	Cut to Fit	<b>\$ 72</b>
TDBR247112	24"	7 Gauge	1-1/2 Round	<b>\$ 64</b>
TDBR263P	26"	3 Gauge	Cut to Fit	<b>\$107</b>

### OTHER DISC BLADES IN STOCK

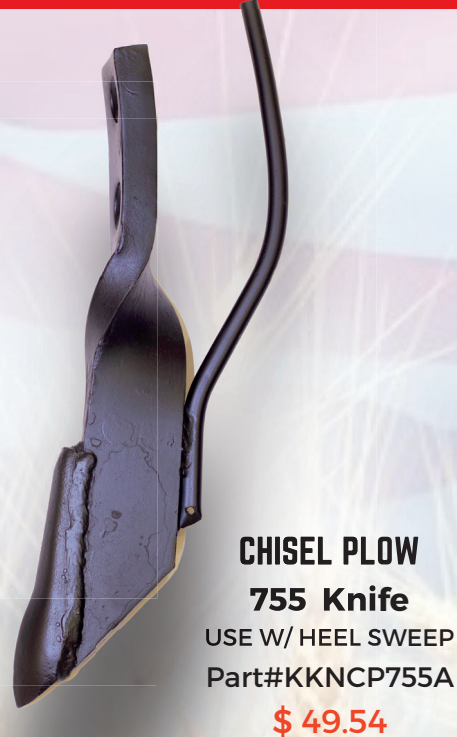
### COULTER BLADES

PART NUMBER	SIZE	THICKNESS	DESCRIPTION	PRICE
TCOF17157MLWR	17"	4.0mm	WAVY	<b>\$ 31</b>
TCOC201770LML	20"	4.5mm	CRUCIBLE	<b>\$ 43</b>
TCOP22197S	22"	5.0mm	PLAIN	<b>\$ 39</b>
TCOP241970LML	24"	5.0mm	PLAIN	<b>\$ 49</b>

**OTHER COULTERS BLADES IN STOCK**  
**PLAIN/FLUTED/CRUCIBLE/TURBO/WAVY**



# ANHYDROUS SYSTEMS FOR YOUR IMPLEMENT



- METER
- METER STAND
- MANIFOLDS
- MANIFOLD STANDS
- ACME ADAPTOR
- ACME CAP
- BREAKAWAY COUPLER (PIONEER 1")
- EVA TUBING (3/8" & 3/4")
- NH3 NURSE TANK HOSE (1 X 3')
- FITTINGS AND CONNECTORS



**OUR KITS INCLUDE EVERYTHING YOU NEED TO CONVERT AND PLUMB YOUR FIELD CULTIVATOR, CHISEL PLOW, V-BLADE TO ANHYDROUS JUST ADD YOUR KNIVES/TUBES AND GO!!! CALL FOR A CUSTOM KIT**



**CONTINENTAL R9590**  
**IN-LINE HYDRAULIC SHUT-OFF**  
Part#NHSR9590  
**\$ 428.72**



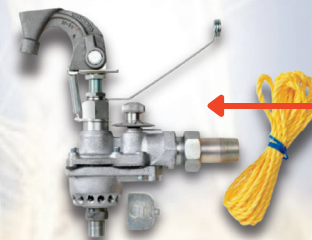
**SUPER DUTY EVA TUBING**  
**3/8" 300' ROLL 250 PSI**  
Part#HOEVO38SD  
**\$.93' PER FOOT**  
**3/4" 300' ROLL 150 PSI**  
Part#HOEVO34SD  
**\$1.88' PER FOOT**



**18 OUTLET MANIFOLD**  
Part#NMF18  
**\$ 69.26**



**1" MPT X 1-3/4"**  
**ACME ADAPTOR AND CAP**  
Part#NAF263FC- **\$ 6.16**  
Part#NAFA524B- **\$ 28.84**



**SUPER SPECIAL**  
**CONTINENTAL C2500 METER**  
**W/ 14 OUTLET MANIFOLD**  
Part#NMEC2500  
**\$ 1,000**  
Reg. \$ 1,270

**2503 METER ROPE PULL**  
Part#NMEC2503  
**\$ 1,255**

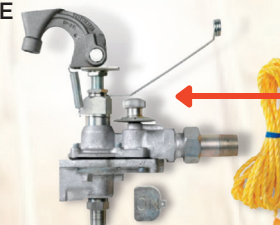


**1" BREAKAWAY COUPLER**  
Part#NBA4506  
**\$ 490.31**



**3' TO 20' IN STOCK**

**1" NURSE TANK HOSE**  
**AMMONIA HIGH PRESSURE HOSE**  
3' - **\$ 64.66**  
Part#HONN0103  
6' - **\$ 94.59**  
Part#HONN0106  
12' - **\$ 160.38**  
Part#HONN0112  
16' - **\$ 200.23**  
Part#HONN0116



**CONTINENTAL C4103 METER**  
Part#NMEC4103  
**\$ 1329**  
**SUPER SPECIAL**  
**CONTINENTAL C4100 METER**  
**4100 W/14 OUTLET MANIFOLD**  
Part#NMEC4100  
**\$ 1,000**





REPLACES JOHN DEERE PART# N236516



## JOHN DEERE SPRING HARROW TINES



**\$ 26.00**

**JOHN DEERE 4 WRAP TINE**  
20" LONG, 13" WIDE  
6.75" BETWEEN COILS



FITS JOHN DEERE CHISEL PLOW MODELS: 2400, 2410  
FITS JOHN DEERE AIR SEEDER MODELS: 1840  
FITS JOHN DEERE DISK MODELS: 2620, 2623, 2625

## SPRING HARROW TINES

TTID3	DAGELMAN 3 WRAP	\$ 10.00	
TTIJD1C	JD 3 WRAP FREE SWING	\$ 8.99	
TTIJD3	JD 3 WRAP RIGID	\$ 6.82	
TTIJD4	JD 4 WRAP	\$ 7.07	
TTIKS1	KRAUS 3 WRAP LIGHT	\$ 6.10	
COMING Soon	TTIKS2	KRAUS 3 WRAP HEAVY	\$ 10.12
TTIN2	NOBLE 2 WRAP	\$ 7.29	
TTIN3	NOBLE 3 WRAP	\$ 6.78	
TTIN3L	NOBLE 3 WRAP LONG	\$ 7.53	
TTIWR1	WILRICH 3 WRAP	\$ 6.80	
NEW	TTIJD7	JOHN DEERE 4 WRAP	\$ 26.00



### ENDURAPLAS PUMP COVER



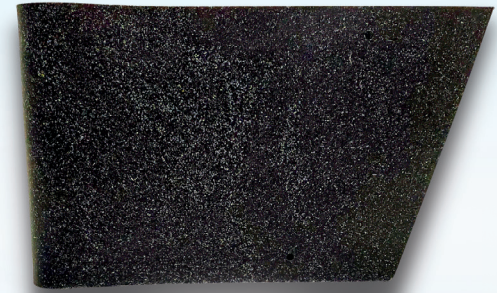
Part#ASREPC01

### \$ 124.40 PROTECT YOUR PUMP

MATERIAL - POLYETHYLENE  
LENGTH - 20"  
WIDTH - 15"  
HEIGHT - 17"



### SHANK PROTECTORS



V SWEEP SHANK PROTECTOR  
Part#TSWP  
**\$ 50.60**



CHISEL PLOW  
2" SHANK GUARD  
Part#TSCPG  
**\$ 3.25**



FIELD CULTIVATOR  
1 - 3/4" SHANK GUARD  
Part#TSFP  
**\$ 3.23**

### GRAIN DRILL LIQUID MANIFOLD CONVERSION

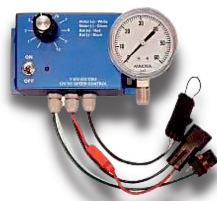
- CUSTOM MADE
- SKIDS/TANKS
- EASY INSTALLATION
- CLOG FREE ORIFICE HOSE
- USER FRIENDLY ELECTRICAL PUMPS
- CAB OPERATED CONTROLS



### CUSTOM MADE FOR YOUR DRILL, CALL FOR QUOTE

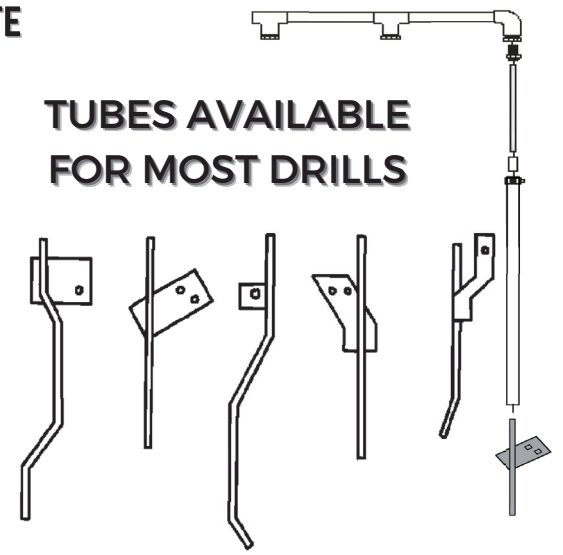
### 12V SPEED CONTROLLER

Part#SMTAKSC35200



REPLACEMENT WIRING KITS  
**IN STOCK**

### TUBES AVAILABLE FOR MOST DRILLS





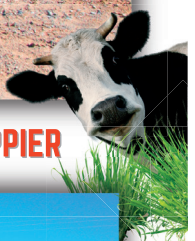
**GRASS APPLICATOR  
HEAVY DUTY** **HD**



**LIQUID OR NH3 SYSTEM  
FIELD READY**



**PUT YOUR FERTILIZER DOLLARS IN THE "ROOT ZONE" YOUR CATTLE WILL BE HAPPIER**



**HEAVY SHANK  
2" WIDE BY 1-1/2" THICK**

**RUBBER TORSION  
COULTER UNITS**



**LONG WEARING KNIFE**

- SWIVELING COULTER ASSEMBLY
- SPRING LOADED PRESS WHEEL
- EASY HOOK-UP HITCH
- DUAL GAUGE WHEELS



**8 & 10 ROW FIELD READY WITH  
NH3 METERING SYSTEM,  
HYDRAULIC FOLD**

**WE DO LIQUID TOO!!!**



**Big Country**  
by WAKO



## ENDURAPLAS TANK



**10 YEAR WARRANTY**  
**3000 GALLON**

ENDURAPLAS BLACK VERTICAL TANK

Part#TAVE3000

**\$ 3418**

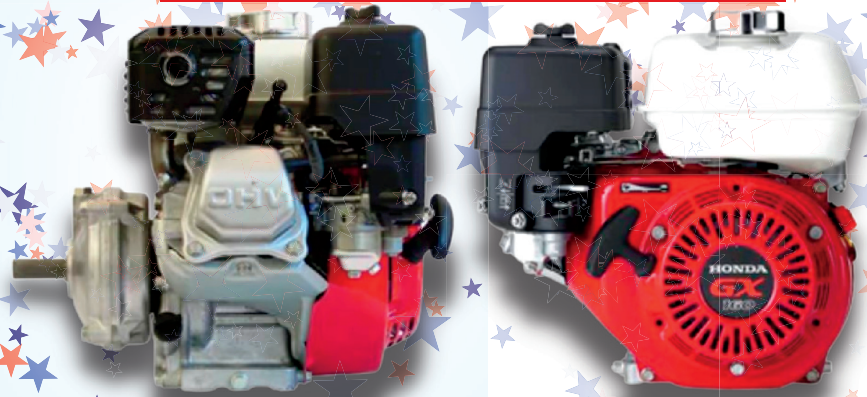
## CLOSE OUT STOCK TANKS

**BLACK LABEL HEAVY DUTY STEEL**

**HEAVY  
DUTY**



## HONDA GX160 5.5 HP ENGINE W/ 6:1 GEAR REDUCTION



LOOK TO HONDA ENGINES FOR SMOOTH AND QUIET PERFORMANCE WITH A RELIABLE TRACK RECORD. THE 5.5 HP HONDA ENGINE WITH GEAR REDUCER CAN POWER YOUR PRESSURE WASHERS, WATER PUMPS, GENERATORS, AND A VARIETY OF AGRICULTURAL AND INDUSTRIAL EQUIPMENT. THE EMISSIONS ARE LOW AND THE POWER OUTPUT IS HIGH WITH A BALL BEARING CRANKSHAFT AND AN OPTIMUM AIR FILTRATION SYSTEM.

**\$624**

Part#ENGH5HP

### STEEL OBLONG

2 X 2 X 4

PART# MEST2100

**\$ 91**

2 X 2 X 6

PART# MEST2102

**\$ 151**

### ROUND

2 X 4

PART# MEST2025

**\$ 142**

2 X 6

PART# MEST2029

**\$ 230**

2 X 10

PART# MEST2037

**\$ 458**

### POLY STOCK TANK

6 X 2

PART# MESTHP206

**\$ 207**







### MINI-MITE SPRAYER



**WAKO MFG.**  
**25 GALLON**  
**W/HANDWAND/BOOM/DR**  
**OPS**  
**3.5 GPM SHURFLO PUMP**

**BOOMLESS SPRAYER**  
**25 GALLON**  
**\$ 549.95**

25 GALLON W/HANDWAND  
 #10 FASTCAP BOOM EXTENDER NOZZLES  
 3.5 GPM PENTAIR SHURFLO PUMP  
 Part#ASRM2535BMLSS2

15 GALLON  
 1.8 GPM PUMP  
 HANDWAND ONLY- **\$279.95**  
 HANDWAND & BOOM- **\$339.95**

25 GALLON  
 1.8 GPM PUMP  
 HANDWAND ONLY- **\$ 299.95**

3.5 GPM PUMP  
 HANDWAND ONLY- **\$ 319.95**  
 HANDWAND & BOOM **\$ 379.95**

50 GALLON  
 3.5 GPM PUMP  
 HANDWAND ONLY- **\$ 419.95**

### WAKO ATV/UTV SPOT SPRAYER FEATURES:

- PREMIUM ACE TANK W/ DRAIN PLUG
- QUALITY 12 VOLT SHURFLO PUMP (1YR. WARRANTY)
- HANDWAND
- BANJO FITTINGS W/MICRO-VITON VALVES
- BYPASS AGITATION SYSTEM W/PRESSURE GAUGE
- 15' OF PREMIUM 3/8" EPDMHOSE
- DOUBLE FILTERING - AT PUMP INTAKE AND AT NOZZLES
- 80" COVERAGE BOOM OR 240" COVERAGE BOOMLESS

### UTV/ SIDE X SIDE SPRAYERS

#### FS MFG.

**GAS - 4HP HONDA 120**  
**50 GALLON 4HP HONDA**  
 Part#ASRMATV50  
**\$ 2,915**

**100 GALLON 4HP HONDA**  
 Part#ASRMATV100  
**\$ 3,246**

#### GAS WITH 3 SECTION ELECTRONIC CAB CONTROLS

**50 GALLON GAS W/CAB CONTROLS**  
 Part#ASRMATV50ECCAS  
**\$ 3,775**

**100 GALLON W/ELECTRONIC CAB CONTROL**  
 Part#ASRMATV100ECCAS  
**\$ 3,987**

#### ELECTRIC

**50 GALLON 12V**  
 Part#ASRMATV50E  
**\$ 2,440**

**100 GALLON 12V**  
 Part#ASRMATV100E  
**\$ 2,984**



#### WAKO ROADRUNNER75

##### FEATURES:

- 75 GALLON ACE TANK
- 30' HOSE W/REEL
- HANDWAND
- BANJO FITTINGS
- CAB ACCESS CONTROL
- 30' BOOMLESS NOZZLE KIT
- Optional: Steel Booms



#### GAS

5.5HP HONDA GX 160  
 ACE 85 CENTRIFUGAL PUMP  
 Part#ASRW075  
**\$ 2,968**

#### ELECTRIC 12V

5.3GPM SHURFLO PUMP  
 W/PRESSURE SWITCH  
 Part#ASRW075E  
**\$ 2,485**

### SPRAY TIPS



**TURBO TWIN JET**  
 Part#STPTTJ11004  
 #04  
**\$ 4.83**



**FLOOD**  
 Part#STPAN4  
 #4  
**\$ 1.70**



**GUARDIAN AIR**  
 Part#STPGA11003  
 #03  
**\$ 7.76**



#### ENDURAPLAS

**MORE SHIPMENTS COMING SOON!**



#### ELECTRIC ECOLITE

100 GALLON 12V ECOLITE  
 Part#ASREATV100ECO  
**\$ 2,923**

#### FIELD BOSS 365 GAS W/3 SECTION ELECTRONIC CAB CONTROLS

60 GALLON FIELD BOSS 365  
 W/ELECTRIC SOLENOID CONTROLS  
 Part#ASREATV60FBES  
**\$ 3,351**

100 GALLON FIELD BOSS 365  
 W/ELECTRIC SOLENOID CONTROLS  
 Part#ASREATV100FBES  
**\$ 4,026**

#### FIELD BOSS 365 GAS 4HP HONDA 120

60 GALLON FIELD BOSS 365  
 Part#ASREATV60  
**\$ 3,279**

100 GALLON FIELD BOSS 365  
 Part#ASREATV100  
**\$ 3,225**

#### ENDURAPLAS ADD ON OPTIONS:

- 12' Steel Boom
- 13' Poly Boom
- 30' Boomless Kit

**FULLY REPLACEABLE PARTS ALL AVAILABLE AT WAKO**





SERVING WAKO CUSTOMERS FROM COAST TO COAST



## STORE HOURS

**CLOSED MON, JULY 4TH**

<b>MONDAY</b>	<b>8:00 AM - 5:00 PM</b>
<b>TUESDAY</b>	<b>8:00 AM - 5:00 PM</b>
<b>WEDNESDAY</b>	<b>8:00 AM - 5:00 PM</b>
<b>THURSDAY</b>	<b>8:00 AM - 5:00 PM</b>
<b>FRIDAY</b>	<b>8:00 AM - 5:00 PM</b>
<b>SATURDAY</b>	<b>8:00 AM - 12:00 PM</b>
<b>SUNDAY</b>	<b>CLOSED</b>



*Thank You*  
**TO OUR CUSTOMERS**

(800) 299-4300

(580) 234-3434

PARTS EXT:

407

409

419



**WILL TYNER**  
EQUIPMENT SALES SPECIALIST

EXT. 404



**MICKI WARD,**  
EQUIPMENT SALES SPECIALIST

EXT. 406



VISA



DISCOVER

